



# **Whittier Tech at NECC: A Shared Vision for Career and College Readiness**

Creating a Collaborative, Innovative Campus for the Future

Addressing critical needs for both schools while expanding opportunities for students.



Rising demand for **career and technical education**



**Financial challenges** for building new facilities.



Increased focus on **early college and workforce readiness**



A growing need for a **skilled workforce** in career technical labor.



# Understanding the **Barriers**



- **High costs** of new school construction.
- Communities **rejected** the \$445M Whittier Tech project in 2024.
- Whittier Tech's facility is **nearing the end of its life**.
- **Balancing** local K-12 school support with vocational school enrollment.
- **Evolving state policies** impacting career tech enrollment planning.

# A Chance to Innovate and Create Efficiencies



A pioneering model blending career tech education with college and career readiness.



Growing demand for career technical education and early college programs.



Expanded access to free associate degrees through MassEducate and MassGrant Plus.



Shared campus offers a modern, efficient, and affordable solution.

# What “Whittier Tech at NECC” Means



A safe, modern facility  
for all students.

Expanded access to  
career technical training  
and early college  
programs.

Opportunities for every student  
to graduate:

On time.

With on-the-job  
experience.

With a valuable  
workforce  
credential.

# Preparing Every Kind of Learner



## Academic Programs:

- State-of-the-art technology and infrastructure.
- Hands-on job experience.



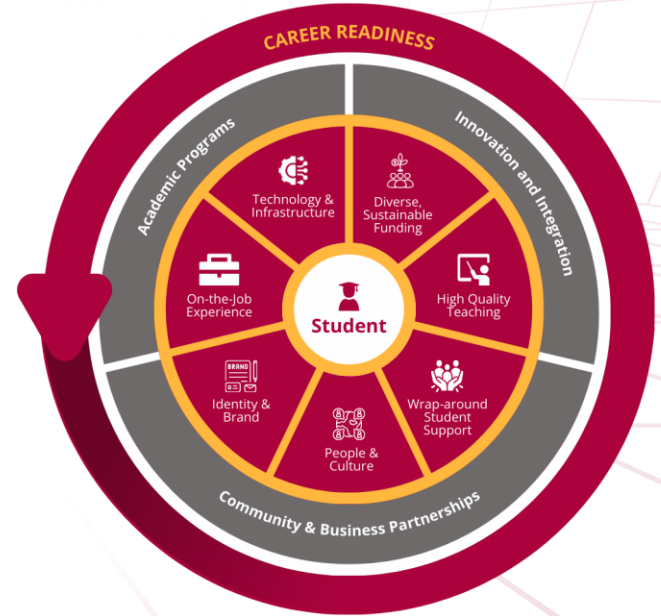
## Innovation & Integration:

- Unified identity and brand.
- Sustainable funding models.
- High-quality teaching and instruction.



## Community & Business Partnerships:

- Job training and hiring through local industries.
- Comprehensive wraparound student support services.



# High School to Career: Construction Trades



- **Occupations:** Carpentry, Electrical, Plumbing, Masonry & Heating
- **Credential Earned:** High school diploma plus practical experience hours toward registered apprenticeship
- **Salary:** \$45-65K for construction trades apprentices at graduation
- **Job Outlook:** 16% job growth in Merrimack Valley 2023-2033\*
- **Cost of Credential:** \$0

\* [Northeast MA Regional Labor Force Blueprint](#)

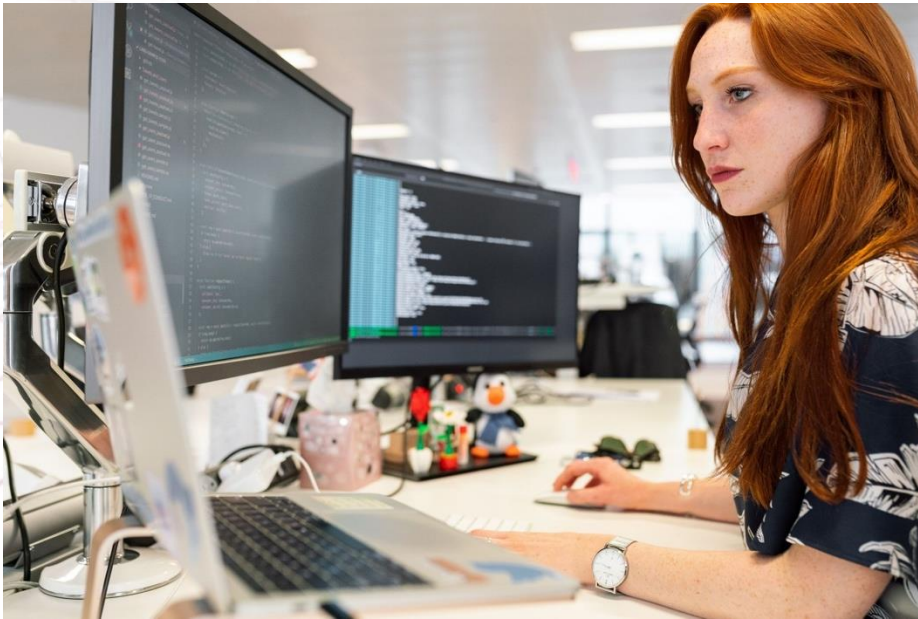
# Early College High School: Career Pathways



- **Pathways:** STEM, Healthcare, Business, Criminal Justice, Education, Liberal Arts
- **Credential Earned:** High school diploma plus certificate and/or associate degree
- **Salary:** \$40-90K (varies by pathway)
- **Job Outlook:** Varies by pathway
- **Cost of Credential:** \$0 (for MassEducate eligible students)



# Early College High School: Computer Science (IT)



- **Occupations:** Computer Programmer, Database Technician, Web Developer, Help Desk Technician
- **Credential Earned:** High school diploma plus associate degree
- **Salary:** \$50-70K for entry level computer programmer
- **Job Outlook:** 14% job growth in Merrimack Valley 2023-2033
- **Cost of Credential:** \$0 (for MassEducate eligible students)

# Early College High School to Bachelor's Degree Transfer: Engineering



- **Occupations:** Chemical Engineer, Mechanical Engineer, Electrical Engineer, Environmental Engineer
- **Credential Earned:** High school diploma, associate degree and bachelor's degree
- **Salary:** \$80-100K for first-year engineer depending on field
- **Job Outlook:** 10% job growth in Merrimack Valley 2023-2033
- **Cost of Credential:** \$0-34K (depending on income status)

# Adult Continuing Education: Trades



- **Occupations:** Electrician, Plumber
- **Credential Earned:** Master's Licensed Plumber
- **Salary:** \$75K+ starting salary
- **Job Outlook:** 14% job growth in Merrimack Valley 2023-2033
- **Cost of Credential:** \$4,200

# Future Workforce Needs & Career Pathways



- **Clean Lab for Manufacturing:** NECC & Whittier Tech have a \$2.5M earmark in the new Economic Development Bill for shared clean lab construction.
- **Additional Future Career Pathways:**
  - Cybersecurity
  - Climatology
  - Clean Energy
  - Artificial Intelligence
  - Drone Technology
  - Autonomous Transportation

# Levels of Collaboration



## Two Schools, One Campus

- Whittier Tech and NECC remain two completely separate entities
- Parcel of land sold, leased, or conveyed from Commonwealth of Massachusetts to Whittier Tech

## Two Schools, Shared Space & Services

- Whittier Tech and NECC remain two completely separate entities
- Parcel of land sold, leased, or conveyed from Commonwealth of Massachusetts to Whittier Tech
- WT & NECC share some space
- WT & NECC share some services (e.g., security, maintenance)

## Two Schools / One Common Identity + Shared Space & Services

- Whittier Tech and NECC remain two completely separate entities
- Parcel of land sold, leased, or conveyed from Commonwealth of Massachusetts to Whittier Tech
- WT & NECC share some space
- WT & NECC share some services (e.g., security, maintenance)
- One common identity is created

## Fully Integrated School Model

- NECC & Whittier Tech merge into a single, newly created entity (e.g., "Essex Polytechnic" or the "Northeast Career Readiness Center")

# Key Considerations for Success



How will we adapt to new vocational school admissions policies?



What are the goals for Early College on this campus?



Which industries should drive planning and how?



How will this impact Whittier Tech's Regional Agreement?

# A Chance to Innovate and Create Efficiencies



Convene Municipalities Working Group for stakeholder collaboration.



Complete Donahue Institute Preliminary Shared Campus Vision Study.



NECC: Complete Jones Architecture Space Utilization Study.



NECC, WT, DCAMM: Determine land use arrangement (based on decided shared campus model).

# Building the Foundation



WT: Explore additional/alternative funding for five-year capital needs plan (e.g., MassWorks, MassDevelopment, etc.)



Continue moving Early College classes onto campus and exploring other shared space opportunities.



NECC & WT: Plan for \$2.5M shared Clean Lab construction and academic programming.



Identify funding sources for study, construction, capital plan and operations.



# Potential Funding Sources

- Whittier Tech
- NECC
- Municipalities
- State earmarks
- Federal earmarks
- Foundation grants
- Higher ed capital
- Shared space
- Sale of current assets
- MSBA
- MassWorks Infrastructure Program
- MassDevelopment Investment
- Chapter 70
- Higher ed appropriations

MASSACHUSETTS

# Gov. Healey proposes \$2.5B to upgrade state and community college campuses

The construction activity spurred by the spending contemplated under the bill would create approximately 15,000 associated jobs, the governor's office said

By Colin A. Young | State House News Service, **Marc Fortier** and **Thea DiGiammerino** •

Published January 21, 2025 • Updated on January 21, 2025 at 1:28 pm



**10 BOSTON NEWS**

ON NOW  
Live: NBC 10 Boston  
Today @ 5AM

### Trending Stories



**CELEBRITY NEWS**

Scarlett Johansson reacts to Brittany Mahomes going out 6 days postpartum: 'I was staring into the abyss'



**BOSTON BUSINESS JOURNAL**

Massachusetts tech firm cuts workforce following leadership shakeup



**MASSACHUSETTS**

After federal agents spotted in East Boston, concerns grow over potential ICE raids

# The Path Forward



Create updated governance and funding model agreement that reflects roles of communities, state, NECC, Whittier Tech, etc.



Secure MSBA project approval and complete study.



Build new school.



Evaluate future use of Whittier Tech's current campus.

# A Bold Step for the Future

Whittier Tech and  
NECC can redefine  
education **together**.

This shared campus  
offers an  
**innovative, cost-  
effective solution.**

Together, we can prepare students for  
success in **education, careers, and life.**



# **Whittier Tech at NECC: A Shared Vision for Career and College Readiness**

Creating a Collaborative, Innovative Campus for the Future